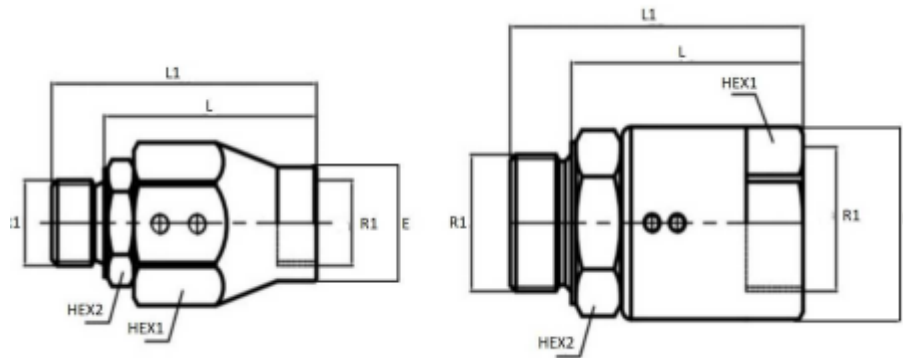


## Swivels Straight



- ◆ Material: Steel
- ◆ Seals: Nitrile (Buna-N), Viton on Request Wear Ring: Teflon
- ◆ Working Temperature: NBR –20°C to +120°C Viton –15°C to +180°C
- ◆ Threads: BSP, NPT by Request



Part #	R1	Max Flow l/min	Max W.P Bar	Max Rotation Pressure	L1	Hex 1	Hex 2	E	L
SJ10-04	1/4 BSP	25	400	200	63	30	19	34	52
SJ10-06	3/8 BSP	45	400	200	66.5	32	24	37.6	54.8
SJ10-08	1/2 BSP	80	360	150	70.8	32	27	39.5	56.6
SJ10-12	3/4 BSP	120	310	150	90.8	41	32	49.5	74.8
SJ10-16	1" BSP	150	280	100	100.2	46	41	54.5	80.8

### Rotating System:

Sizes 1/4, 3/8 and 1/2 have a single ball race.

Sizes 3/4 and 1" have a double ball race.

The SJ swivel is the ideal choice for mounting between a rotating hose and a solid mount to extend the life of the hose.

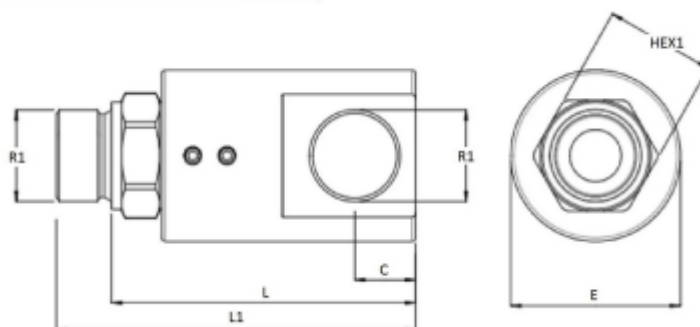
### CAUTION

The SJ swivels are not intended for use in a continuous rotation motion or high speed rotation.

## Swivels 90 Degree



- ◆ Material: Steel
- ◆ Seals: Nitrile (Buna-N), Viton on Request Wear Ring: Teflon
- ◆ Working Temperature: NBR –20°C to +120°C Viton –15°C to +180°C
- ◆ Threads: BSP, NPT by Request



Part #	R1	Max Flow l/min	Max W.P Bar	Max Rotation Pressure	L1	Hex 1	C	E	L
SJ90-04	1/4 BSP	25	400	200	71	319	11.3	33	56.5
SJ90-06	3/8 BSP	45	400	200	76.5	24	15	37.7	61.5
SJ90-08	1/2 BSP	80	360	150	89	27	17	39.5	69
SJ90-12	3/4 BSP	120	310	150	100	34	19	55.9	80
SJ90-16	1" BSP	150	280	100	119	41	22.9	59.5	95

### Rotating System:

Sizes 1/4, 3/8 and 1/2 have a single ball race.

Sizes 3/4 and 1" have a double ball race.

The SJ swivel is the ideal choice for mounting between a rotating hose and a solid mount to extend the life of the hose.

### CAUTION

The SJ swivels are not intended for use in a continuous rotation motion or high speed rotation.